

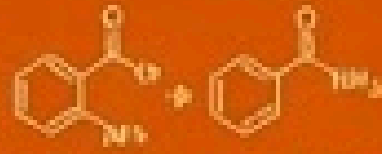


Crop Safe

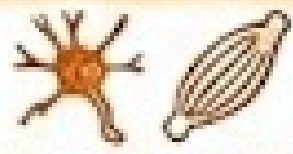
PESTICIDES INDIA PVT LTD

# CYHALODIAMIDE 18% + LUFENURON 6% SC

INSECTICIDE (DIAMIDE + CSI)



DIAMIDE + CHITIN SYNTHESIS INHIBITOR



RYANODINE ACTIVATOR & MOLTING BLOCKER



LEPIDOPTERAN & SUCKING PEST CONTROL



OVICIDAL, LARVICIDAL & RESIDUAL

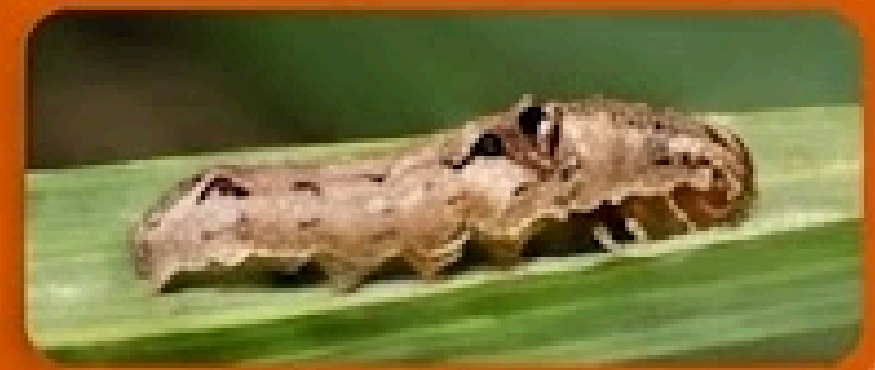
## TARGET PESTS



Bollworm



Whitefly



Stem borer

## CROPS

- Cotton
- Vegetables
- Fruits
- Rice

## PRODUCT DESCRIPTION

Advanced combination insecticide pairing muscle disruptor with chitin synthesis inhibitor. Provides immediate control plus long-term population suppression through ovicidal and larvicidal effects on multiple pest generations.

## MODE OF ACTION

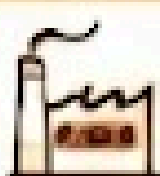
Cyhalodiamide disrupts muscle function via ryanodine receptor activation, while Lufenuron inhibits chitin synthesis preventing proper molting and egg development. This dual action controls existing larvae and prevents population buildup.

## TARGET PESTS

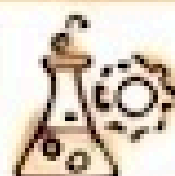
- Bollworms
- Whiteflies
- Leafminers
- Stem borers
- Fruit borers

## COMPREHENSIVE DOSAGE TABLE

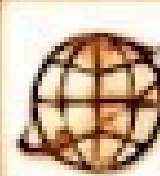
Crop(s)	Common Name of Pest	Dosage/ Ha (Formulation gm)	Dilution in water in ltrs.	Waiting Period (days)



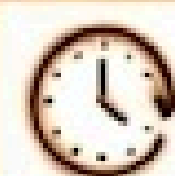
STRONG MANUFACTURING



INNOVATIVE R&D



GLOBAL REGULATORY SUPPORT



DECADES OF EXPERIENCE