

# NITENPYRAM 40%+PYMETROZINE 30% WG

## INSECTICIDE



**FAST-ACTING NEONICOTINOID  
& FEEDING BLOCKER**



**QUICK KNOCKDOWN  
& FEEDING CESSATION**



**SYSTEMIC &  
TRANSLAMINAR ACTIVITY**

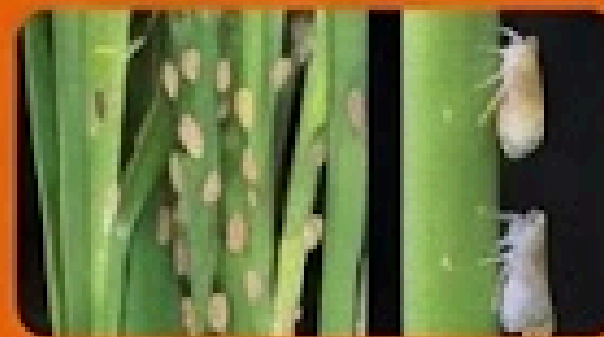


**SUPERIOR SPRAY  
TANK MIXING**

### TARGET PESTS



Asian Citrus Psyllid  
(*Diaphorina citri*)



Leafhoppers  
(*Amrasca biguttula*)



Aphids



Whiteflies (*Bemisia tabaci*,  
*Trialeurodes vaporariorum*)

### CROPS

-  Cotton
-  Rice
-  Vegetables
-  Citrus

### PRODUCT DESCRIPTION

Water-dispersible granule formulation combining fast-acting neonicotinoid with selective homopteran feeding blocker. Provides excellent systemic and translaminar activity with quick dissolution and superior spray tank mixing.

### TARGET PESTS

- Aphids
- Whiteflies (*Bemisia tabaci*, *Trialeurodes vaporariorum*)
- Planthoppers (*Nilaparvata lugens*, *Sogatella furcifera*)
- Leafhoppers
- Asian citrus psyllid (*Diaphorina citri*)

### MODE OF ACTION

Nitenpyram rapidly activates nicotinic receptors causing immediate paralysis, while Pymetrozine inhibits feeding behavior by blocking stylet insertion. This dual mechanism ensures quick knockdown with feeding cessation preventing virus transmission.

### TARGET PESTS

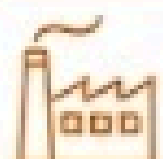
- Aphids
- Whiteflies (*Bemisia tabaci*, *Trialeurodes vaporariorum*)
- Planthoppers (*Nilaparvata lugens*, *Sogatella furcifera*)
- Leafhoppers (*Amrasca biguttula*)
- Asian citrus psyllid (*Diaphorina citri*)

### DOSAGE

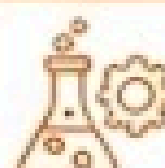
Crop/Pest	Dosage (gm)	Water (L)	PHI (Days)
Cotton - Aphid/Jassids/Thrips	60-75	500-750	26
Rice - Brown plant hopper/White backed plant hopper	60-75	500-750	37
Chilli - Aphids/Thrips	125-150	500	5

### APPLICATION BENEFITS

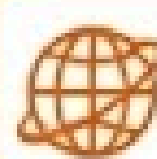
Quick knockdown with feeding cessation.  
Prevents virus transmission.  
Excellent systemic and translaminar activity.  
Superior spray tank mixing.



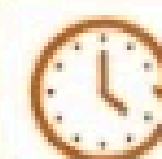
**STRONG  
MANUFACTURING**



**INNOVATIVE  
R&D**



**GLOBAL  
REGULATORY  
SUPPORT**



**DECADES OF  
EXPERIENCE**