

# THIOPHANATE METHYL 70% WG

## SYSTEMIC FUNGICIDE



SYSTEMIC FUNGICIDE



PROTECTIVE +  
CURATIVE ACTION



BROAD SPECTRUM  
DISEASE CONTROL

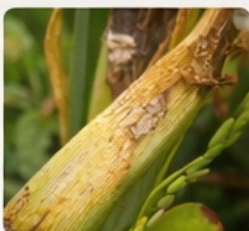


EXCELLENT  
TRANSLOCATION &  
PENETRATION

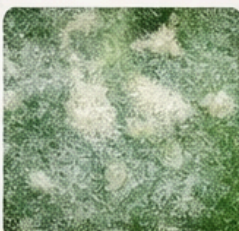
### TARGET DISEASES



Blast



Sheath Blight



Powdery Mildew



Anthracnose



Scab

### CROPS



Rice



Vegetables



Fruits



Ornamentals

### PRODUCT DESCRIPTION

Thiophanate Methyl 70% WG is a broad-spectrum systemic fungicide with protective and curative action. It provides effective control of various fungal diseases through excellent plant penetration and translocation. It ensures long-lasting disease management and improved

### MODE OF ACTION

Thiophanate methyl is absorbed by plant tissues and converted into carbendazim, which inhibits tubulin assembly during cell division. This action prevents mitosis in fungal cells, stopping fungal growth and providing

### TARGET DISEASES

- Blast (*Pyricularia oryzae*)
- Sheath blight (*Rhizoctonia solani*)
- Powdery mildew (*Erysiphe spp.*)
- Anthracnose (*Colletotrichum spp.*)
- Scab (*Venturia spp.*)

Crop	Disease	Dosage(a.i)	Formulation	PHI
Chilli	Powdery mildew Fruit rot	0.125-0.1875	0.500-0.750 g/L	500 L/ha



STRONG  
MANUFACTURING



INNOVATIVE  
R&D



GLOBAL  
REGULATORY  
SUPPORT



DECADES OF  
EXPERIENCE

**Crop Safe PESTICIDES INDIA PVT LTD.** Address: Road, Street, Tahur, Porli, 37803

+91 968 957 5501 | www.cropsate.in | cropsate@gmail.com